

WATER QUALITY BUFFER (30 FEET IN WIDTH) COVERAGE COMPARISON TABLES FOR EXISTING SENSITIVE HABITATS

EXISTING NATURAL HABITATS -

Water Quality Buffer (30 feet in width) Coverage
Natural Sensitive Habitats

Location (Map #)	Habitat Unit	EXISTING			APPROVED 2009 MDP			PROPOSED 2014 MDP		
		Aquatic Edge (Linear ft.) ¹		Aquatic Edge with ≥ 30 ft. Buffer (Linear Feet)	Aquatic Edge (Linear ft.) ¹		Aquatic Edge with ≥ 30 ft. Buffer (Linear Feet)	Aquatic Edge (Linear ft.) ¹		Aquatic Edge with ≥ 30 ft. Buffer (Linear Feet)
		Existing Linear Feet	Existing Buffered Linear Feet		% Buffered	Approved 2009 Linear Feet		Approved 2009 Linear Feet	% Buffered	
ENV-4	Isolated Wetland S	1368	1368	100%	1368	1368	100%	1368	1368	100%
ENV-4	Stream V	2903	2903	100%	2903	2903	100%	2903	2903	100%
ENV-4	Amenia Brook ¹	7078	3226	46%	7078	5961	84%	7078	6947	98%
ENV-5	Wetland J	6727	6081	90%	6727	6433	96%	6727	6599	98%
ENV-5	Stream L	1233	509	41%	1233	1088	88%	1233	1114	90%
ENV-6	Wetland P	403	403	100%	403	403	100%	403	403	100%
ENV-6	Wetland AM-15	7850	7222	92%	7850	7850	100%	7850	7850	100%
N/A	Wetland U	2257	2257	100%	2257	2257	100%	2257	2257	100%
N/A	Wetland X	428	428	100%	428	428	100%	428	428	100%
N/A	Wetland W	3317	3317	100%	3317	3317	100%	3317	3317	100%
Totals		33,564	27,714	83%	33,564	32,008	95%	33,564	33,186	99%

NOTES

- Linear aquatic edge for ponds/SWM is measured by the shoreline distance of waterbody. Linear edge habitat for wetlands is determined using the delineated line distance of the wetland. Stream linear edge habitat is calculated according to the linear distance along the top of each bank (banks) of stream bed. Current and (Proposed) edge habitat distances vary in some instances due to expansion of existing ponds or day-lighting of stream channels for the redesigned golf course (see Figures ENV-4,5,6 for additional detail).
- The current buffered area represents site conditions and on-site vegetative buffers, in excess of 30 feet in width, presently adjacent to sensitive habitats at the Silo Ridge Site as of August 2008.
- The proposed buffered area represents all conservation and water quality buffers identified in the Habitat Management Plan in excess of 30 feet in width. When appropriate, percent buffered calculations include the expanded habitat distances identified for total aquatic edge.
- Amenia Brook includes Wetland C-1, Wetland C-2, and Wetland C-3

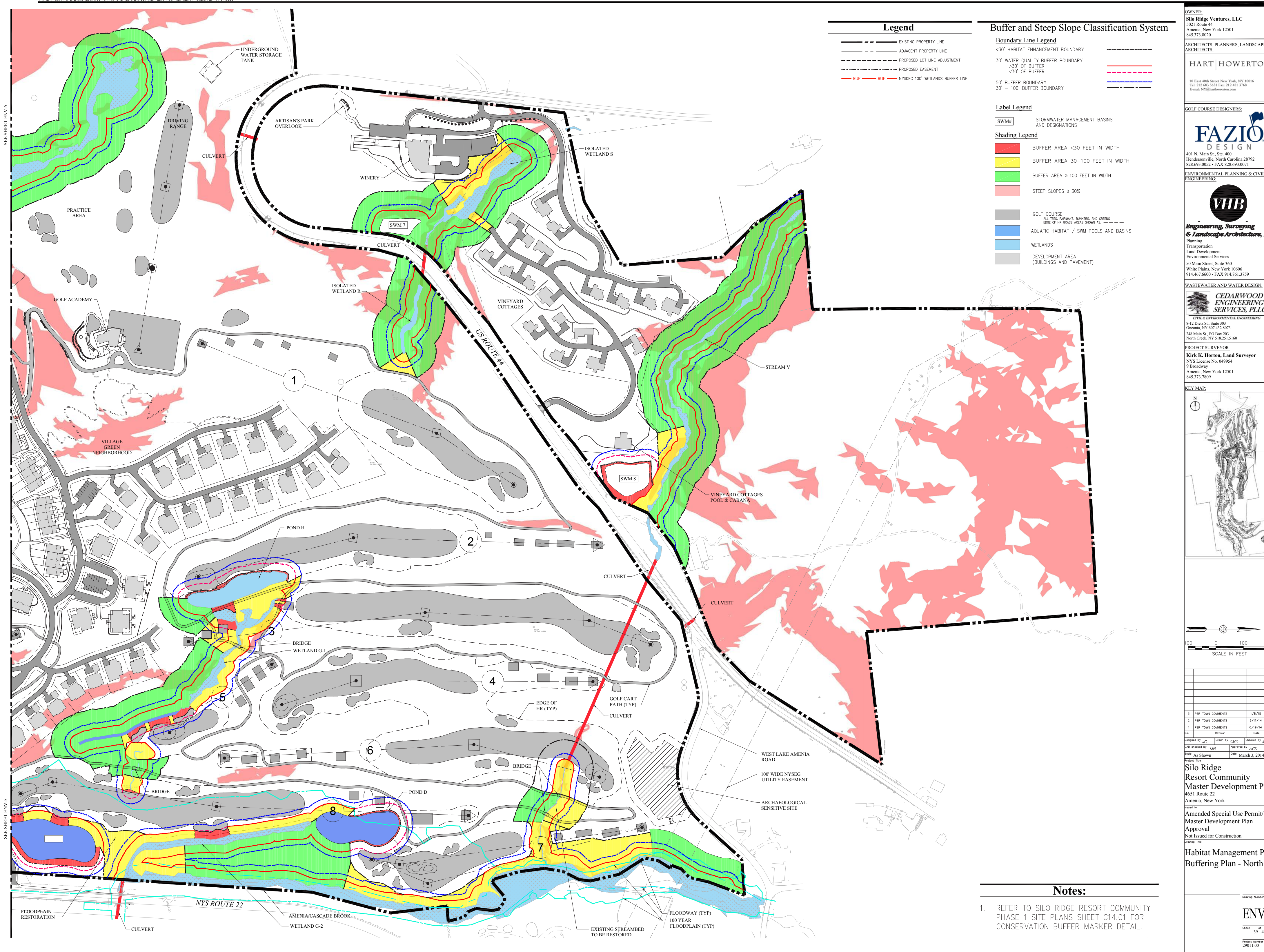
CONSTRUCTED HABITATS -

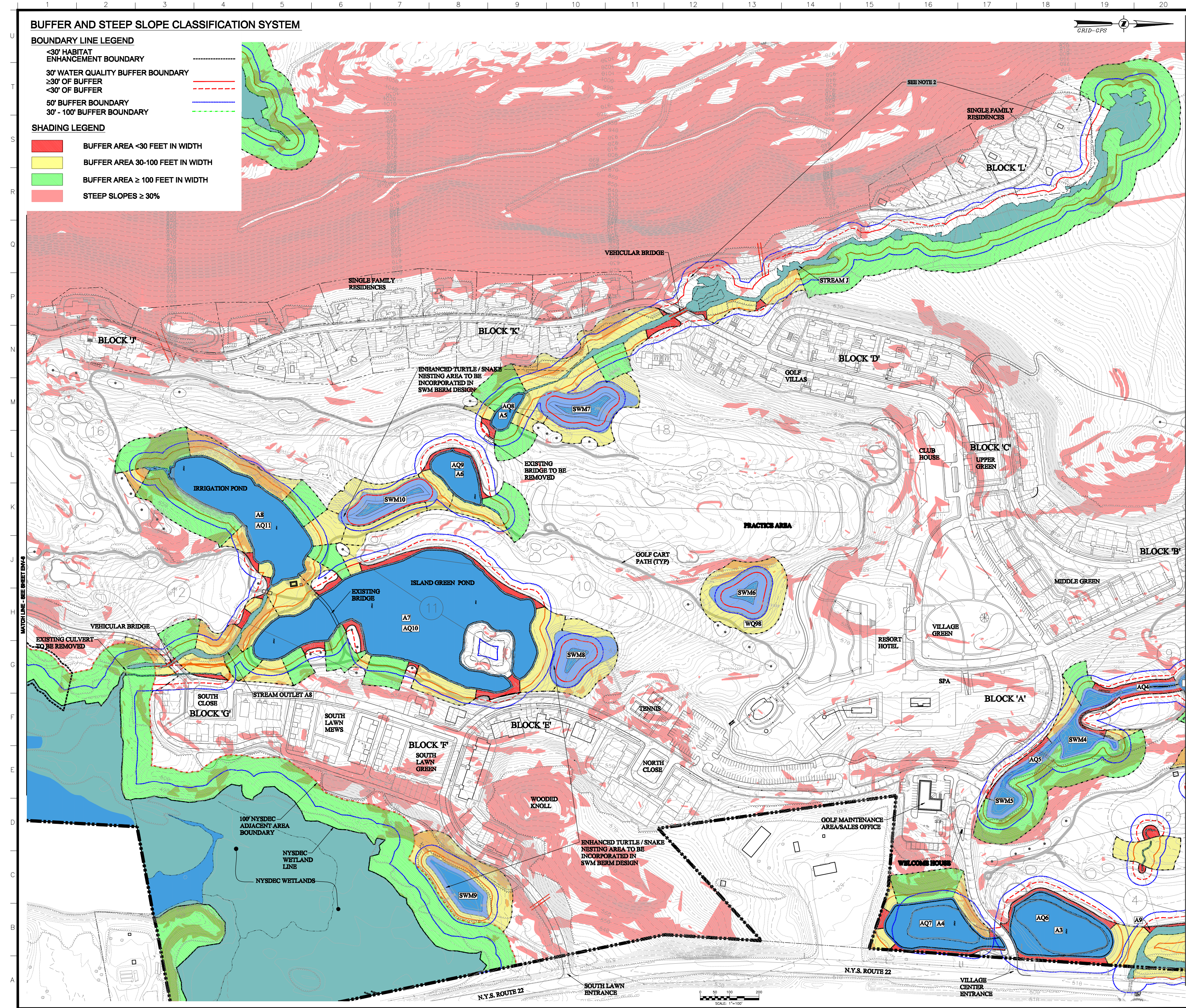
Water Quality Buffer (30 feet in width) Coverage
Constructed Habitats

Location (Map #)	Habitat Unit	EXISTING			APPROVED 2009 MDP			PROPOSED 2014 MDP		
		Aquatic Edge (Linear ft.) ¹		Aquatic Edge with ≥ 30 ft. Buffer (Linear Feet)	Aquatic Edge (Linear ft.) ¹		Aquatic Edge with ≥ 30 ft. Buffer (Linear Feet)	Aquatic Edge (Linear ft.) ¹		Aquatic Edge with ≥ 30 ft. Buffer (Linear Feet)
		Existing Linear Feet	Existing Buffered Linear Feet		% Buffered	Approved 2009 Linear Feet		Approved 2009 Linear Feet	% Buffered	
ENV-4	Isolated Stream R	712	712	100%	712	712	100%	712	572	80%
ENV-4	Pond D	696	696	0%	1031	616	60%	740	290	39%
ENV-4	Pond H	817	0	0%	817	545	67%	807	175	22%
ENV-4	Stream E-1	472	253	54%	472	394	83%	0	0	0%
ENV-4	Stream E-2	1206	0	0%	1806	873	48%	808	808	100%
ENV-4	Isolated Wetland I	242	242	100%	242	0	0%	0	0	0%
ENV-4	SWM 1 - Approved 2009	0	0	0%	463	463	100%	0	0	0%
ENV-4	SWM 2 - Approved 2009	0	0	0%	881	440	50%	0	0	0%
ENV-4	SWM 3 - Approved 2009	0	0	0%	277	153	55%	0	0	0%
ENV-4	SWM 4 - Approved 2009	0	0	0%	1781	1067	60%	0	0	0%
ENV-4	SWM 7 - Proposed 2014	0	0	0%	0	0	0%	362	362	100%
ENV-4	SWM 8 - Proposed 2014	0	0	0%	0	0	0%	489	0	0%
ENV-5	Wetland G-1	1604	1299	81%	1604	1192	74%	1604	1352	84%
ENV-5	Wetland G-2	396	0	0%	396	221	56%	396	389	98%
ENV-5	Pond B (SWM 6 - Proposed 2014)	796	0	0%	796	269	34%	927	342	37%
ENV-5	Pond A (SWM 6 - Proposed 2014)	631	0	0%	631	592	94%	830	324	39%
ENV-5	Pond J-1 (SWM 4 - Proposed 2014)	589	0	0%	589	156	26%	1081	878	81%
ENV-5	Pond Z ¹ (SWM 3 - Proposed 2014)	3210	0	0%	3210	2002	62%	2278	1547	68%
ENV-5	Wetland O	1136	0	0%	1136	0	0%	0	0	0%
ENV-5	Wetland OO	156	0	0%	156	0	0%	0	0	0%
ENV-5	SWM 5 - Approved 2009	0	0	0%	375	291	78%	0	0	0%
ENV-5	SWM 6 - Approved 2009	0	0	0%	602	602	100%	0	0	0%
ENV-5	SWM 7 - Approved 2009	0	0	0%	840	789	94%	0	0	0%
ENV-5	SWM 8 - Approved 2009	0	0	0%	690	690	100%	0	0	0%
ENV-5	SWM 9 - Approved 2009	0	0	0%	660	660	100%	0	0	0%
ENV-5	SWM 10 - Approved 2009	0	0	0%	801	801	100%	0	0	0%
ENV-5	SWM 5 - Proposed 2014	0	0	0%	0	0	0%	879	879	100%
ENV-5	Stream QQ	670	0	0%	670	393	59%	0	0	0%
ENV-6	Stream NP	341	0	0%	341	164	48%	525	525	100%
ENV-6	Wetland N (SWM 2 - Proposed 2014)	390	0	0%	390	205	53%	744	374	50%
ENV-6	SWM 11 - Approved 2009	0	0	0%	1405	1405	100%	0	0	0%
ENV-6	SWM 1 - Proposed 2014	0	0	0%	0	0	0%	401	354	88%
ENV-6	Water Feature - Proposed 2014	0	0	0%	0	0	0%	709	340	48%
Totals		15,780	4,192	27%	25,490	17,272	68%	15,704	10,620	68%

NOTES

- Linear aquatic edge for ponds/SWM is measured by the shoreline distance of waterbody. Linear edge habitat for wetlands is determined using the delineated line distance of the wetland. Stream linear edge habitat is calculated according to the linear distance along the top of each bank (banks) of stream bed. Current and (Proposed) edge habitat distances vary in some instances due to expansion of existing ponds or day-lighting of stream channels for the redesigned golf course (see Figures ENV-4,5,6 for additional detail).
- The current buffered area represents site conditions and on-site vegetative buffers, in excess of 30 feet in width, presently adjacent to sensitive habitats at the Silo Ridge Site as of August 2008.
- The proposed buffered area represents all conservation and water quality buffers identified in the Habitat Management Plan in excess of 30 feet in width. When appropriate, percent buffered calculations include the expanded habitat distances identified for total aquatic edge.
- The reduction of the aquatic edges for Ponds K and Z is due to the removal of the green island at the northern edge for Pond Z, as well as the connection of Pond K with Pond Z.





ARCHITECT OF RECORD - RESORT
JF Jensen Fry
 1730 East West Boulevard, WA 98052

ARCHITECT OF RECORD - RESIDENTIAL
MINNO & WASKO
 ARCHITECTS AND PLANNERS

SOIL CONSULTANT
ERNEST & ERNEST
 ENGINEERS AND ARCHITECTS

WATER AND WASTEWATER TREATMENT FACILITIES
ROBERT A.M. STERN ARCHITECTS, LLP

WATER QUALITY BUFFER (30 FEET IN WIDTH) COVERAGE COMPARISON TABLES FOR EXISTING SENSITIVE HABITATS

WATER QUALITY BUFFER (30 FEET IN WIDTH) COVERAGE COMPARISON TABLES FOR EXISTING SENSITIVE HABITATS

EXISTING NATURAL HABITATS -

Water Quality Buffer (30 feet in width) Coverage Natural Sensitive Habitats

Location (Map #)	Habitat Unit	EXISTING			APPROVED 2009 MDP			PROPOSED 2014 MDP		
		Aquatic Edge (Linear ft.) ¹	Aquatic Edge with ≥ 30 ft. Buffer (Linear Feet)		Aquatic Edge (Linear ft.) ¹	Aquatic Edge with ≥ 30 ft. Buffer (Linear Feet)		Aquatic Edge (Linear ft.) ¹	Aquatic Edge with ≥ 30 ft. Buffer (Linear Feet)	
		Existing Linear Feet	Existing Buffered Linear Feet	% Buffered	Approved 2009 Linear Feet	Approved 2009 Linear Feet	% Buffered	Proposed 2014 Linear Feet	Proposed Buffered Linear Feet	% Buffered
ENV-4	Isolated Wetland S	1368	1368	100%	1368	1368	100%	1368	1368	100%
ENV-4	Stream V	2903	2903	100%	2903	2903	100%	2903	2903	100%
ENV-4	Amenia Brook ²	7078	3226	46%	7078	5961	84%	7078	6947	98%
ENV-5	Wetland J	6727	6081	90%	6727	6433	96%	6727	6599	98%
ENV-5	Stream L	1233	509	41%	1233	1088	88%	1233	1114	90%
ENV-6	Wetland P	403	403	100%	403	403	100%	403	403	100%
ENV-6	Wetland AM-15	7850	7222	92%	7850	7850	100%	7850	7850	100%
N/A	Wetland U	2257	2257	100%	2257	2257	100%	2257	2257	100%
N/A	Wetland X	428	428	100%	428	428	100%	428	428	100%
N/A	Wetland W	3317	3317	100%	3317	3317	100%	3317	3317	100%
Totals		33,564	27,714	83%	33,564	32,008	95%	33,564	33,186	99%

NOTES

- Linear aquatic edge for ponds/SWM is measured by the shoreline distance of waterbody. Linear edge habitat for wetlands is determined using the delineated line distance of the wetland. Stream linear edge habitat is calculated according to the linear distance along the top of each bank (2banks) of stream bed. Current and (Proposed) edge habitat distances vary in some instances due to expansion of existing ponds or day-lighting of stream channels for the redesigned golf course (see Figures ENV-4,5,6 for additional detail).
- The current buffered area represents site conditions and on-site vegetative buffers, in excess of 30 feet in width, presently adjacent to sensitive habitats at the Silo Ridge Site as of August 2008.
- The proposed buffered area represents all conservation and water quality buffers identified in the Habitat Management Plan in excess of 30 foot in width. When appropriate, percent buffered calculations include the expanded habitat distances identified for total aquatic edge.
- Amenia Brook includes Wetland C-1, Wetland C-2, and Wetland C-3

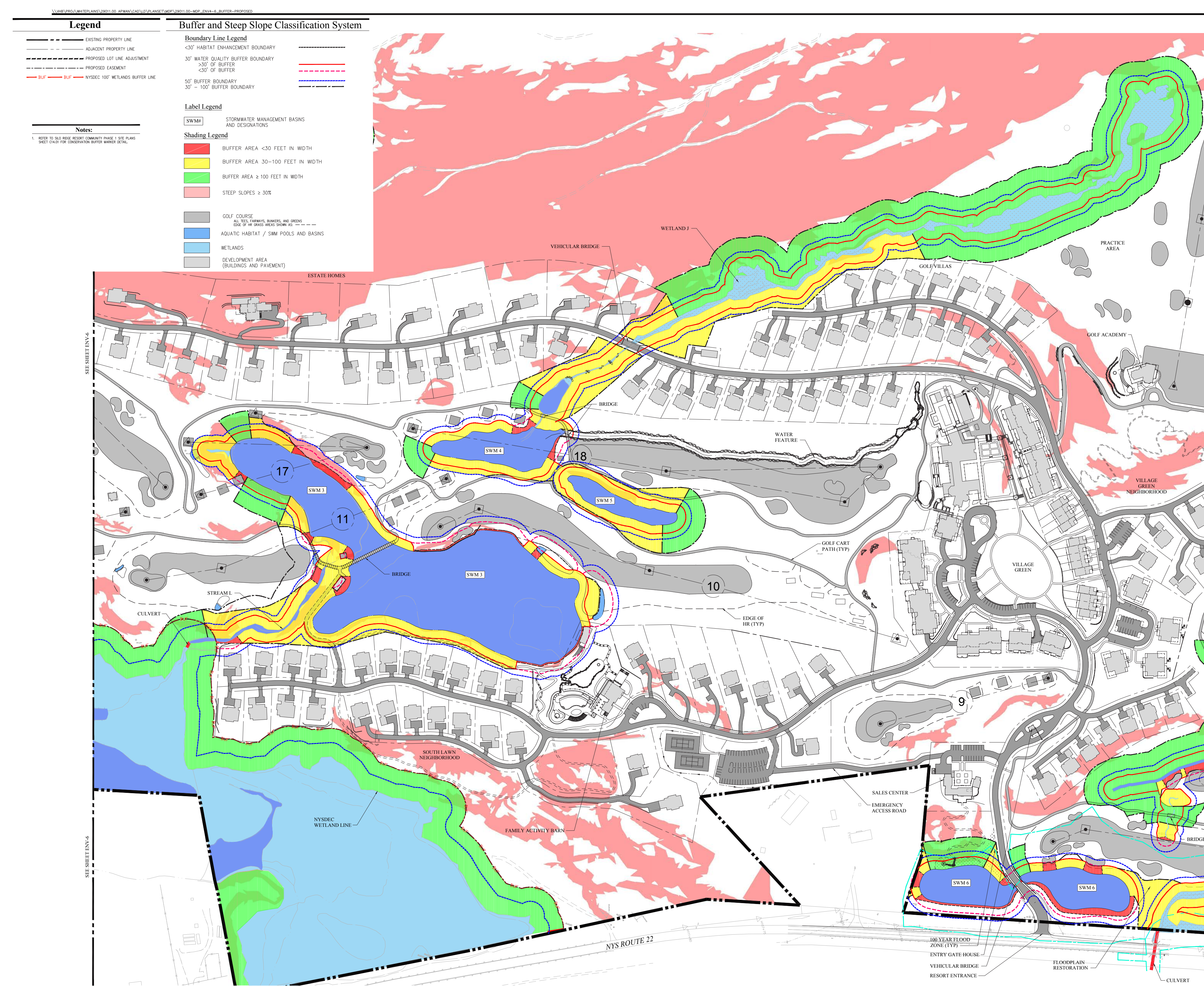
CONSTRUCTED HABITATS -

Water Quality Buffer (30 feet in width) Coverage Constructed Habitats

Location (Map #)	Habitat Unit	EXISTING			APPROVED 2009 MDP			PROPOSED 2014 MDP		
		Aquatic Edge (Linear ft.) ¹	Aquatic Edge with ≥ 30 ft. Buffer (Linear Feet)		Aquatic Edge (Linear ft.) ¹	Aquatic Edge with ≥ 30 ft. Buffer (Linear Feet)		Aquatic Edge (Linear ft.) ¹	Aquatic Edge with ≥ 30 ft. Buffer (Linear Feet)	
		Existing Linear Feet	Existing Buffered Linear Feet	% Buffered	Approved 2009 Linear Feet	Approved 2009 Linear Feet	% Buffered	Proposed 2014 Linear Feet	Proposed Buffered Linear Feet	% Buffered
ENV-4	Isolated Stream R	712	712	100%	712	712	100%	712	572	80%
ENV-4	Pond D	696	696	0%	1031	616	60%	740	290	39%
ENV-4	Pond H	817	0	0%	817	545	67%	807	175	22%
ENV-4	Stream E-1	472	253	54%	472	394	83%	0	0	0%
ENV-4	Stream E-2	1206	0	0%	1806	873	48%	808	808	100%
ENV-4	Isolated Wetland I	242	242	100%	242	0	0%	0	0	0%
ENV-4	SWM 1 - Approved 2009	0	0	0%	463	463	100%	0	0	0%
ENV-4	SWM 2 - Approved 2009	0	0	0%	881	440	50%	0	0	0%
ENV-4	SWM 3 - Approved 2009	0	0	0%	277	153	55%	0	0	0%
ENV-4	SWM 4 - Approved 2009	0	0	0%	1781	1067	60%	0	0	0%
ENV-4	SWM 7 - Proposed 2014	0	0	0%	0	0	0%	362	362	100%
ENV-4	SWM 8 - Proposed 2014	0	0	0%	0	0	0%	489	0	0%
ENV-5	Wetland G-1	1604	1299	81%	1604	1192	74%	1604	1352	84%
ENV-5	Wetland G-2	396	0	0%	396	221	56%	396	389	98%
ENV-5	Pond B (SWM 6 - Proposed 2014)	796	0	0%	796	269	34%	927	342	37%
ENV-5	Pond A (SWM 6 - Proposed 2014)	631	0	0%	631	592	94%	830	324	39%
ENV-5	Pond J-1 (SWM 4 - Proposed 2014)	589	0	0%	589	156	26%	1081	878	81%
ENV-5	Pond Z' (SWM 3 - Proposed 2014)	3210	0	0%	3210	2002	62%	2278	1547	68%
ENV-5	Pond K' (SWM 3 - Proposed 2014)	1716	990	58%	1716	1577	92%	1412	1109	79%
ENV-5	Wetland O	1136	0	0%	1136	0	0%	0	0	0%
ENV-5	Wetland OO	156	0	0%	156	0	0%	0	0	0%
ENV-5	SWM 5 - Approved 2009	0	0	0%	375	291	78%	0	0	0%
ENV-5	SWM 6 - Approved 2009	0	0	0%	602	602	100%	0	0	0%
ENV-5	SWM 7 - Approved 2009	0	0	0%	840	789	94%	0	0	0%
ENV-5	SWM 8 - Approved 2009	0	0	0%	690	690	100%	0	0	0%
ENV-5	SWM 9 - Approved 2009	0	0	0%	660	660	100%	0	0	0%
ENV-5	SWM 10 - Approved 2009	0	0	0%	801	801	100%	0	0	0%
ENV-5	SWM 5 - Proposed 2014	0	0	0%	0	0	0%	879	879	100%
ENV-5	Stream QQ	670	0	0%	670	393	59%	0	0	0%
ENV-6	Stream N/P	341	0	0%	341	164	48%	525	525	100%
ENV-6	Wetland N (SWM 2 - Proposed 2014)	390	0	0%	390	205	53%	744	374	50%
ENV-6	SWM 11 - Approved 2009	0	0	0%	1405	1405	100%	0	0	0%
ENV-6	SWM 1 - Proposed 2014	0	0	0%	0	0	0%	401	354	88%
ENV-6	Water Feature - Proposed 2014	0	0	0%	0	0	0%	709	340	48%
Totals		15,780	4,192	27%	25,490	17,272	68%	15,704	10,620	68%

NOTES

- Linear aquatic edge for ponds/SWM is measured by the shoreline distance of waterbody. Linear edge habitat for wetlands is determined using the delineated line distance of the wetland. Stream linear edge habitat is calculated according to the linear distance along the top of each bank (2banks) of stream bed. Current and (Proposed) edge habitat distances vary in some instances due to expansion of existing ponds or day-lighting of stream channels for the redesigned golf course (see Figures ENV-4,5,6 for additional detail).
- The current buffered area represents site conditions and on-site vegetative buffers, in excess of 30 feet in width, presently adjacent to sensitive habitats at the Silo Ridge Site as of August 2008.
- The proposed buffered area represents all conservation and water quality buffers identified in the Habitat Management Plan in excess of 30 foot in width. When appropriate, percent buffered calculations include the expanded habitat distances identified for total aquatic edge.
- The reduction of the aquatic edges for Ponds K and Z is due to the removal of the green island at the northern edge for Pond Z, as well as the connection of Pond K with Pond Z.



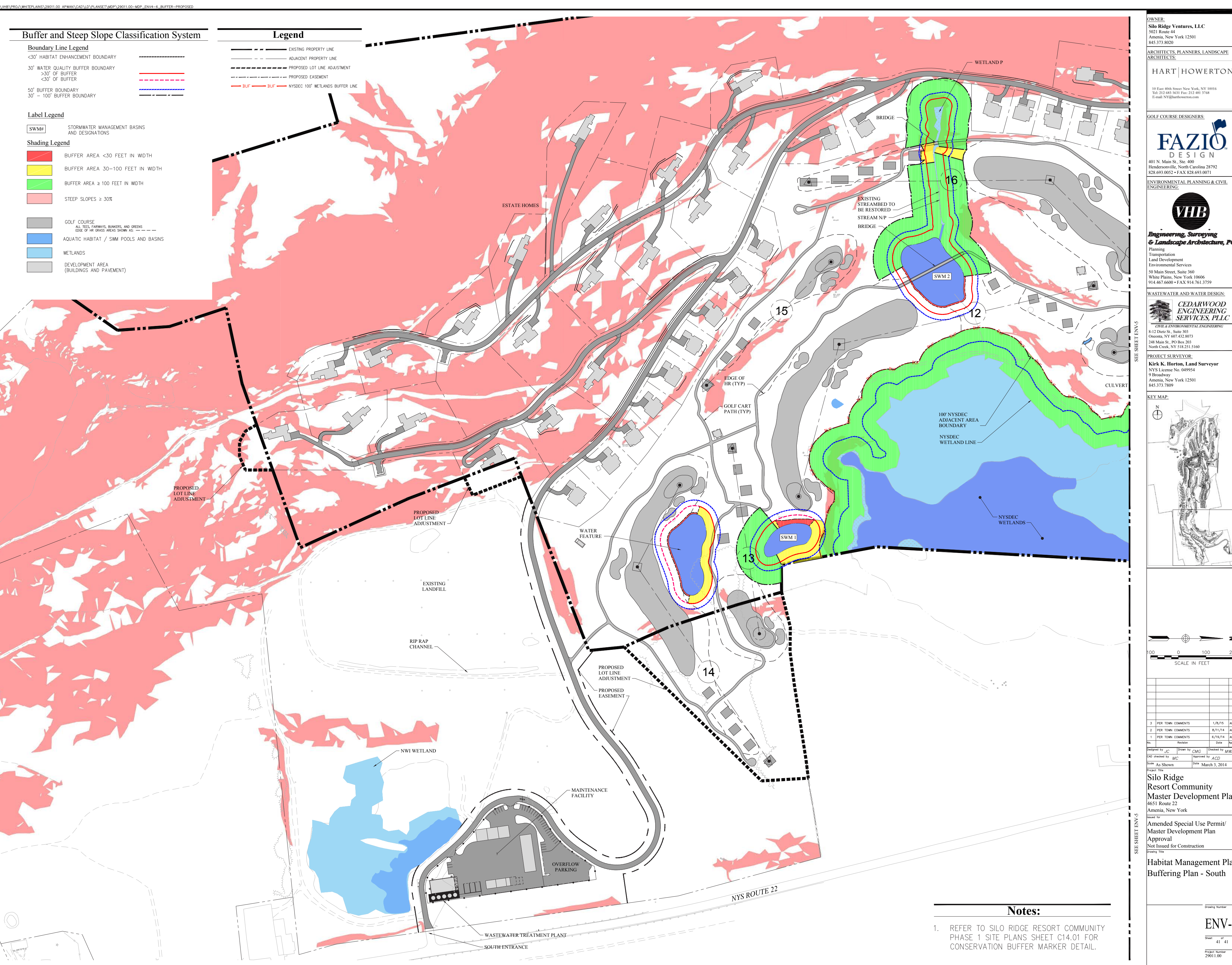
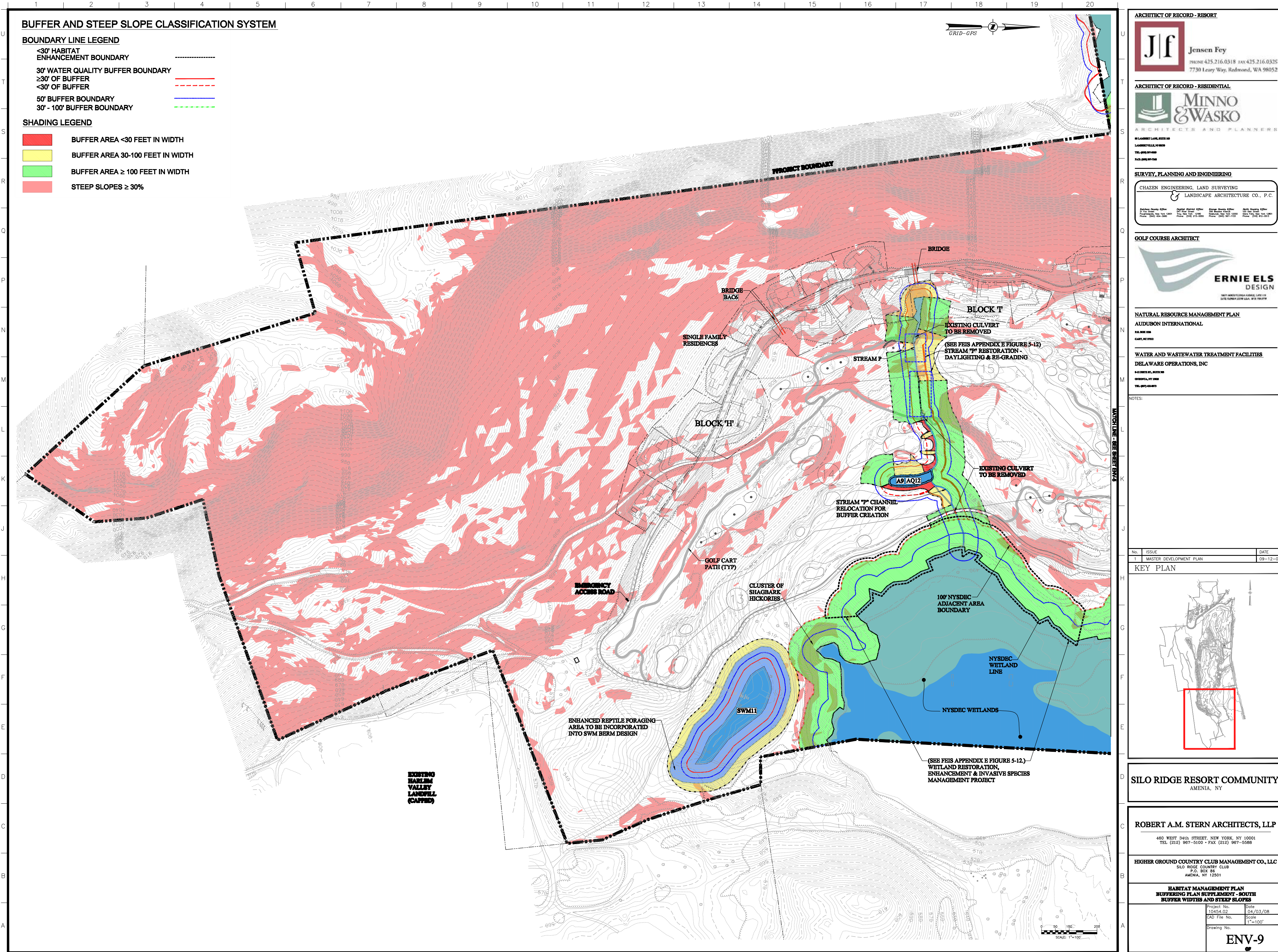
ARCHITECT OF RECORD - RESORT
JF Jensen Fry
 1730 East West Boulevard, WA 98052

ARCHITECT OF RECORD - RESIDENTIAL
MINNO & WASKO
 ARCHITECTS AND PLANNERS

SOIL CONSULTANT
ERNEST & ERNEST
 ENGINEERS AND ARCHITECTS

WATER AND WASTEWATER TREATMENT FACILITIES
ROBERT A.M. STERN ARCHITECTS, LLP

WATER QUALITY BUFFER (30 FEET IN WIDTH) COVERAGE COMPARISON TABLES FOR EXISTING SENSITIVE HABITATS



WATER QUALITY BUFFER (30 FEET IN WIDTH) COVERAGE COMPARISON TABLES FOR EXISTING SENSITIVE HABITATS

EXISTING NATURAL HABITATS -

Water Quality Buffer (30 feet in width) Coverage Natural Sensitive Habitats

Location (Map #)	Habitat Unit	EXISTING			APPROVED 2009 MDP			PROPOSED 2014 MDP		
		Aquatic Edge (Linear ft.) ¹	Aquatic Edge with ≥ 30 ft. Buffer (Linear Feet)		Aquatic Edge (Linear ft.) ¹	Aquatic Edge with ≥ 30 ft. Buffer (Linear Feet)		Aquatic Edge (Linear ft.) ¹	Aquatic Edge with ≥ 30 ft. Buffer (Linear Feet)	
		Existing Linear Feet	Existing Buffered Linear Feet	% Buffered	Approved 2009 Linear Feet	Approved 2009 Linear Feet	% Buffered	Proposed 2014 Linear Feet	Proposed Buffered Linear Feet	% Buffered
ENV-4	Isolated Wetland S	1368	1368	100%	1368	1368	100%	1368	1368	100%
ENV-4	Stream V	2903	2903	100%	2903	2903	100%	2903	2903	100%
ENV-4	Amenia Brook ⁴	7078	3226	46%	7078	5961	84%	7078	6947	98%
ENV-5	Wetland J	6727	6081	90%	6727	6433	96%	6727	6599	98%
ENV-5	Stream L	1233	509	41%	1233	1088	88%	1233	1114	90%
ENV-6	Wetland P	403	403	100%	403	403	100%	403	403	100%
ENV-6	Wetland AM-15	7850	7222	92%	7850	7850	100%	7850	7850	100%
N/A	Wetland U	2257	2257	100%	2257	2257	100%	2257	2257	100%
N/A	Wetland X	428	428	100%	428	428	100%	428	428	100%
N/A	Wetland W	3317	3317	100%	3317	3317	100%	3317	3317	100%
Totals		33,564	27,714	83%	33,564	32,008	95%	33,564	33,186	99%

- NOTES
- Linear aquatic edge for ponds/SWM is measured by the shoreline distance of waterbody. Linear edge habitat for wetlands is determined using the delineated line distance of the wetland. Stream linear edge habitat is calculated according to the linear distance along the top of each bank (2banks) of stream bed. Current and (Proposed) edge habitat distances vary in some instances due to expansion of existing ponds or day-lighting of stream channels for the redesigned golf course (see Figures ENV-4,5,6 for additional detail).
 - The current buffered area represents site conditions and on-site vegetative buffers, in excess of 30 feet in width, presently adjacent to sensitive habitats at the Silo Ridge Site as of August 2008.
 - The proposed buffered area represents all conservation and water quality buffers identified in the Habitat Management Plan in excess of 30 foot in width. When appropriate, percent buffered calculations include the expanded habitat distances identified for total aquatic edge.
 - Amenia Brook includes Wetland C-1, Wetland C-2, and Wetland C-3

CONSTRUCTED HABITATS -

Water Quality Buffer (30 feet in width) Coverage Constructed Habitats

Location (Map #)	Habitat Unit	EXISTING			APPROVED 2009 MDP			PROPOSED 2014 MDP		
		Aquatic Edge (Linear ft.) ¹	Aquatic Edge with ≥ 30 ft. Buffer (Linear Feet)		Aquatic Edge (Linear ft.) ¹	Aquatic Edge with ≥ 30 ft. Buffer (Linear Feet)		Aquatic Edge (Linear ft.) ¹	Aquatic Edge with ≥ 30 ft. Buffer (Linear Feet)	
		Existing Linear Feet	Existing Buffered Linear Feet	% Buffered	Approved 2009 Linear Feet	Approved 2009 Linear Feet	% Buffered	Proposed 2014 Linear Feet	Proposed Buffered Linear Feet	% Buffered
ENV-4	Isolated Stream R	712	712	100%	712	712	100%	712	572	80%
ENV-4	Pond D	696	696	0%	1031	616	60%	740	290	39%
ENV-4	Pond H	817	0	0%	817	545	67%	807	175	22%
ENV-4	Stream E-1	472	253	54%	472	394	83%	0	0	0%
ENV-4	Stream E-2	1206	0	0%	1806	873	48%	808	808	100%
ENV-4	Isolated Wetland I	242	242	100%	242	0	0%	0	0	0%
ENV-4	SWM 1 - Approved 2009	0	0	0%	463	463	100%	0	0	0%
ENV-4	SWM 2 - Proposed 2014	0	0	0%	881	440	50%	0	0	0%
ENV-4	SWM 3 - Approved 2009	0	0	0%	277	153	55%	0	0	0%
ENV-4	SWM 4 - Approved 2009	0	0	0%	1781	1067	60%	0	0	0%
ENV-4	SWM 5 - Proposed 2014	0	0	0%	0	0	0%	362	362	100%
ENV-4	SWM 6 - Proposed 2014	0	0	0%	0	0	0%	489	0	0%
ENV-4	SWM 7 - Proposed 2014	0	0	0%	1604	1192	74%	1604	1352	84%
ENV-5	Wetland G-1	1604	1299	81%	396	221	56%	396	389	98%
ENV-5	Wetland G-2	396	0	0%	796	269	34%	927	342	37%
ENV-5	Pond B (SWM 6 - Proposed 2014)	796	0	0%	631	592	94%	830	324	39%
ENV-5	Pond A (SWM 6 - Proposed 2014)	631	0	0%	589	156	26%	1081	878	81%
ENV-5	Pond J-1 (SWM 4 - Proposed 2014)	589	0	0%	3210	2002	62%	2278	1547	68%
ENV-5	Pond Z ¹ (SWM 3 - Proposed 2014)	3210	0	0%	1716	1577	92%	1412	1109	79%
ENV-5	Pond K ⁴ (SWM 3 - Proposed 2014)	1716	990	58%	1136	0	0%	0	0	0%
ENV-5	Wetland O	1136	0	0%	156	0	0%	0	0	0%
ENV-5	Wetland N	156	0	0%	375	291	78%	0	0	0%
ENV-5	SWM 5 - Approved 2009	0	0	0%	602	602	100%	0	0	0%
ENV-5	SWM 6 - Approved 2009	0	0	0%	840	789	94%	0	0	0%
ENV-5	SWM 7 - Approved 2009	0	0	0%	690	690	100%	0	0	0%
ENV-5	SWM 8 - Approved 2009	0	0	0%	660	660	100%	0	0	0%
ENV-5	SWM 9 - Approved 2009	0	0	0%	801	801	100%	0	0	0%
ENV-5	SWM 10 - Approved 2009	0	0	0%	0	0	0%	879	879	100%
ENV-5	SWM 5 - Proposed 2014	0	0	0%	670	393	59%	0	0	0%
ENV-5	Stream QQ	670	0	0%	341	164	48%	525	525	100%
ENV-6	Stream N/P	341	0	0%	390	205	53%	744	374	50%
ENV-6	Wetland N (SWM 2 - Proposed 2014)	390	0	0%	1405	1405	100%	401	354	88%
ENV-6	SWM 11 - Approved 2009	0	0	0%	0	0	0%	709	340	48%
ENV-6	SWM 1 - Proposed 2014	0	0	0%	0	0	0%			
ENV-6	Water Feature - Proposed 2014	0	0	0%						
Totals		15,780	4,192	27%	25,490	17,272	68%	15,704	10,620	68%

- NOTES
- Linear aquatic edge for ponds/SWM is measured by the shoreline distance of waterbody. Linear edge habitat for wetlands is determined using the delineated line distance of the wetland. Stream linear edge habitat is calculated according to the linear distance along the top of each bank (2banks) of stream bed. Current and (Proposed) edge habitat distances vary in some instances due to expansion of existing ponds or day-lighting of stream channels for the redesigned golf course (see Figures ENV-4,5,6 for additional detail).
 - The current buffered area represents site conditions and on-site vegetative buffers, in excess of 30 feet in width, presently adjacent to sensitive habitats at the Silo Ridge Site as of August 2008.
 - The proposed buffered area represents all conservation and water quality buffers identified in the Habitat Management Plan in excess of 30 foot in width. When appropriate, percent buffered calculations include the expanded habitat distances identified for total aquatic edge.
 - The reduction of the aquatic edges for Ponds K and Z is due to the removal of the green island at the northern edge for Pond Z, as well as the connection of Pond K with Pond Z.

TITLE: BUFFER PLAN COMPARISON - SOUTH	DATE: JANUARY 2015	DRAWING #: BC-3
---	------------------------------	---------------------------